

LED SQUARE HI-BAY / GAS STATION CANOPY LIGHT

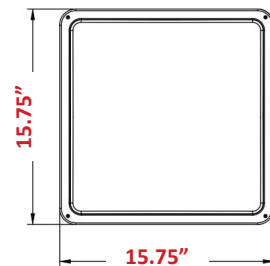
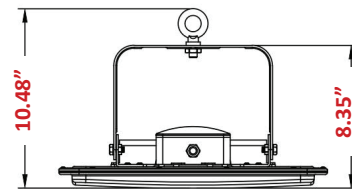


Certification



Applications / Features

- Long life span: by using semiconductor chip as the light resource resulting in a lifespan of 50,000 hours or more.
- No UV & IR : It won't distribute ultraviolet radiation
- Eco-friendly: No Hg & Xe, or other harmful elements.
- Materials are Recyclable.
- Mean Well Power Supply: High Performance external constant current drivers.
- High Efficiency & Power Factor



LED Hi-Pro Temporary Caged Lamp Specifications

Product Code	Wattage	Voltage	Frequency	CCT	Operation Temp	Beam Angle	Power Factor	M.O.L. (Inches)	CRI	Lumens
PHB100LEDMV-60	100W	120-277V	50/60HZ	6000K	-40°~ +60°C	120°	>0.94	130 LPW	>80	13,000
PHB150LEDMV-60	150W	120-277V	50/60HZ	6000K	-40°~ +60°C	120°	>0.94	130 LPW	>80	19,500
PHB200LEDMV-60	200W	120-277V	50/60HZ	6000K	-40°~ +60°C	120°	>0.94	130 LPW	>80	26,000

Application Guide

Mode	Applications	Advantages
UFO	<ul style="list-style-type: none"> ● Warehouse / Factory / Parking ● Not for use in shops, supermarkets or airports 	Price and Popularity
Square Bay Light	<ul style="list-style-type: none"> ● Warehouse / Factory / Parking ● Food Factories: Recessed or surface mounted - No dust ● Supermarket / Shops / Airports / Gas Stations - more suitable for commercial applications than UFO fixture 	<ul style="list-style-type: none"> ● Price and shape ● Commercial and industrial applications ● Less glare and uniform light distribution ● 5 different installation options

New creation

Soft brightness
Excellent
user
experience

Beautiful
simple

Light
weight

Three core design techniques

Low Glare

Soft light

Wide Beam Angle

135
lm/w

UGR
-26

Visual comfort

UGR
-29

Visual affective

Microwave Control

DALI

DALI Control

ZigBee Control

We are total different with all UFO

● Suspension mounting

● Ceiling mounting

● Recessed mounting

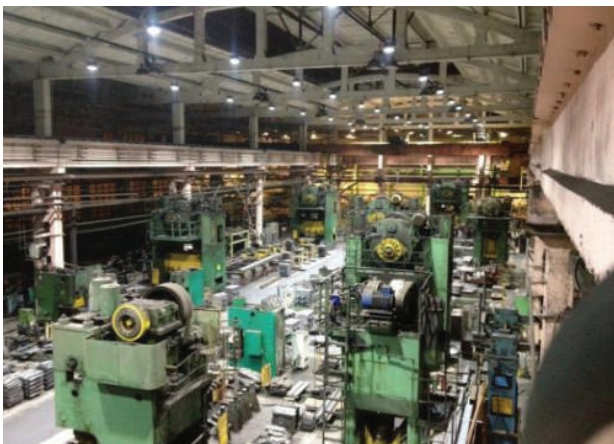
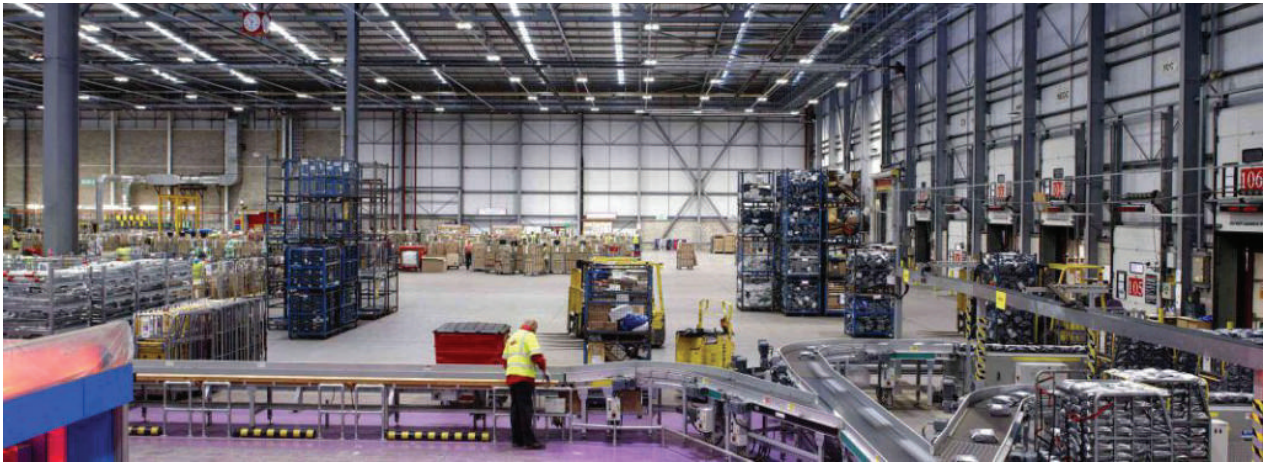
● Hook mounting

● Bracket mounting

1. Warehouse



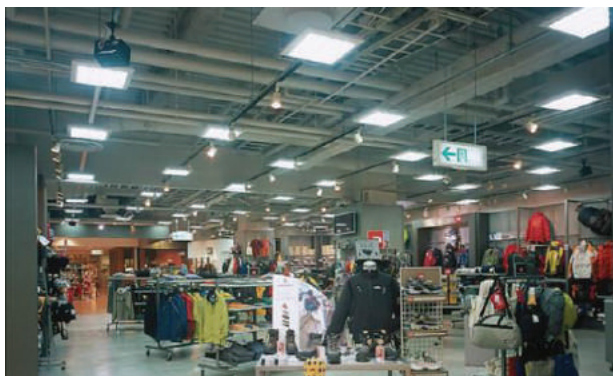
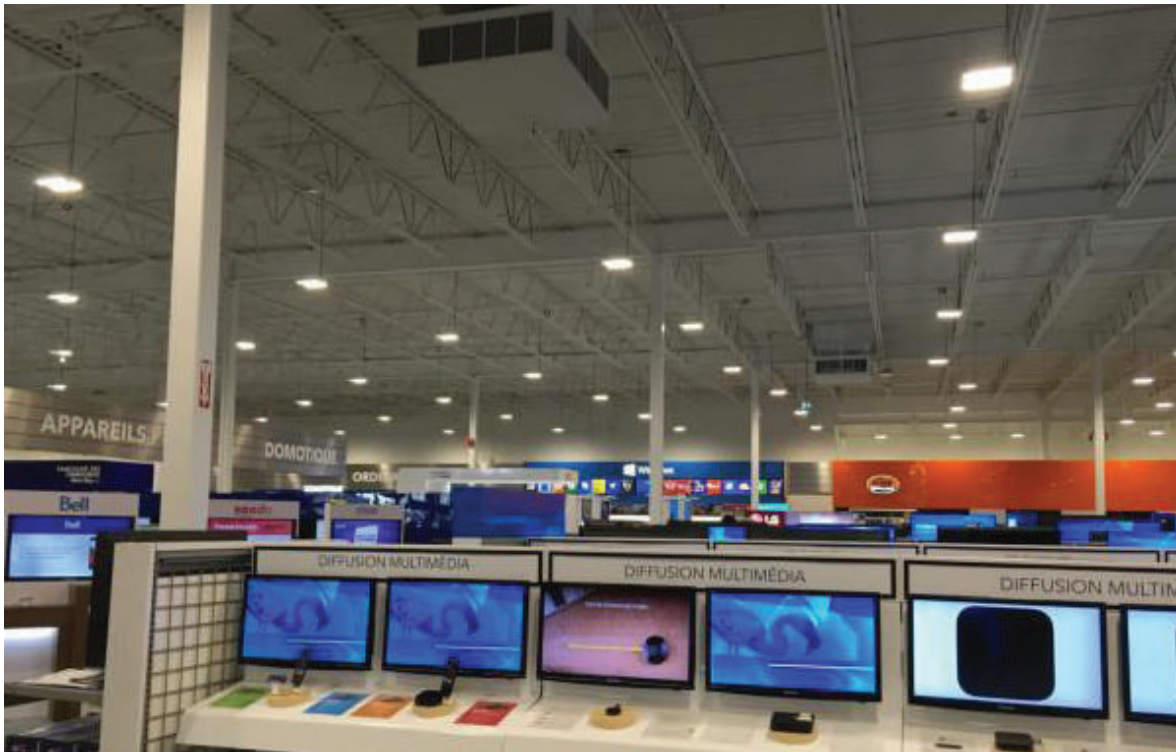
2. Workshops



3. Airports



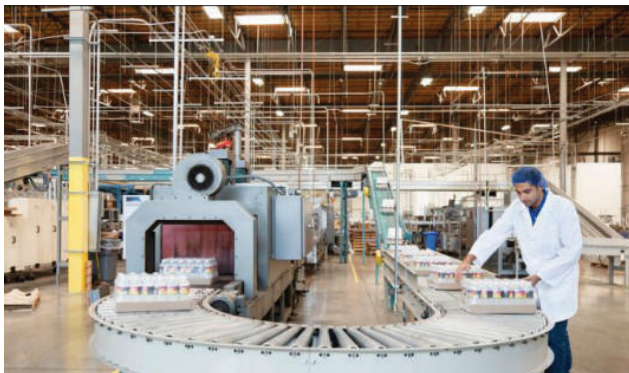
4. Stores



5. Gas Stations



6. Food Processing Plants



7. Parking Areas

