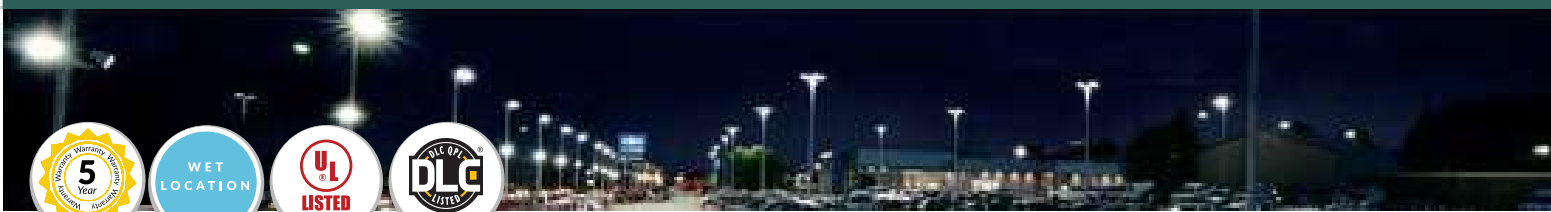


LED Street/Roadway Lights With Nema Twist-Lock Photocell



Excellent solution for a variety of site lighting applications

The LED Street/Roadway Light with Nema Twist-Lock Photocell Option is an excellent solution for a variety of site lighting applications including streets, roadways, alleys, loading docks, doorways, pathways, and parking areas. It features a durable housing made of die-cast aluminum. This area light comes with 2 brackets for mounting on 1.5" and 2.5" poles.

Housing Specification

- Die-Cast Aluminum
- Powder Coat Finish (Light Grey) w/NEMA Twist-lock photocell socket, shorting cap incl.
- 6KV lightning surge protection
- Operating temperature: -40°F to 104°F
- Lifespan: 70,000 hr.
- IP Rating: IP65

Electrical Specification

- Voltage: 100~277VAC
- Wattage: 50W, 100W, 150W, 200W
- Power factor: >0.90
- Efficacy: 50W-135LM/W
- Efficacy: 100W-135LM/W
- Efficacy: 150W-140LM/W
- Efficacy: 200W-135LM/W

Lens Specification

- Lens: Optical TYPE III Lens
- Total lumens: 6750LM, 13500LM, 21000LM, 27000LM
- Color temperature: 5000K
- Color rendering index: >70

Optional Accessory



1800W Tungsten Twist Lock Photocell



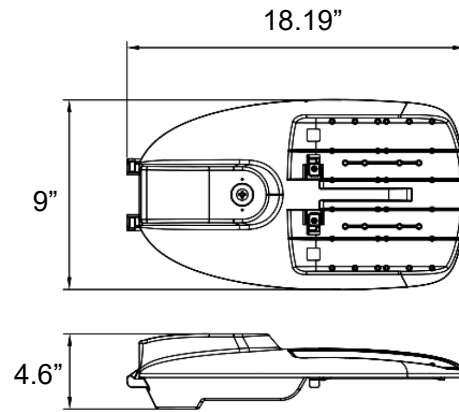
LED Street Roadway Light With Nema Twist Lock, 100-277V Quick Search Code: SC10369



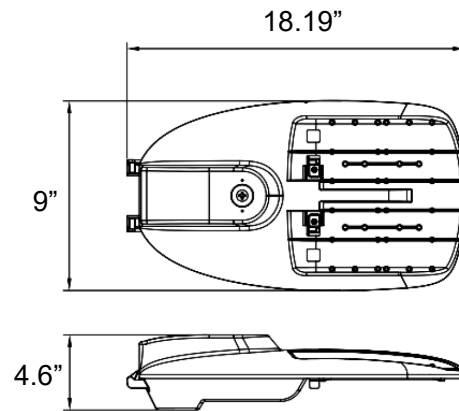
Product No	Description	MH	Voltage
DTD-50W-50K-P	50W 6750LM 5000K	175 MH	100-277V
DTD-100W-50K-P	100W 13500LM 5000K	250 MH	100-277V
DTD-150W-50K-P	150W 21000LM 5000K	350 MH	100-277V
DTD-200W-50K-P	200W 27000LM 5000K	400 MH	100-277V

DIMENSIONS

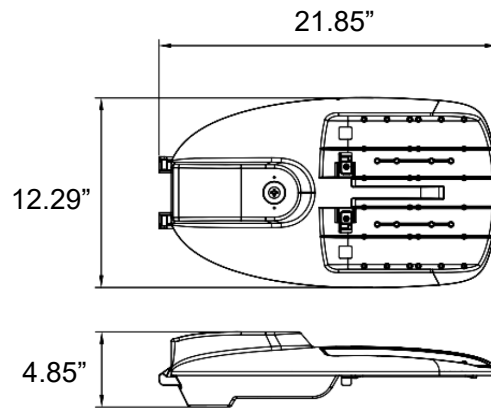
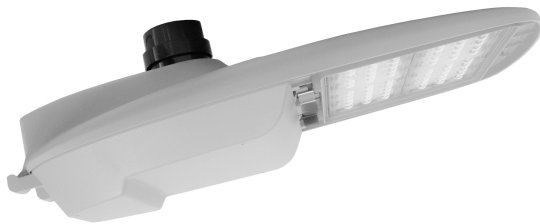
50W
18.19" (L) x 9" (W) x 4.6" (H)



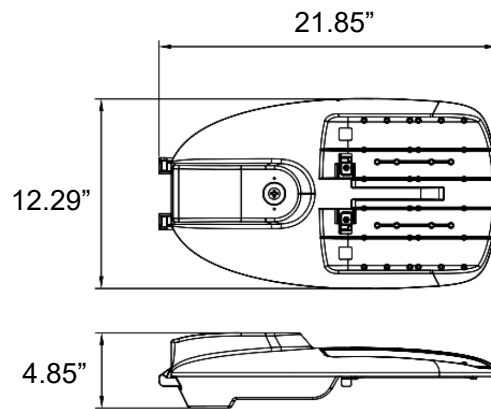
100W
18.19" (L) x 9" (W) x 4.6" (H)



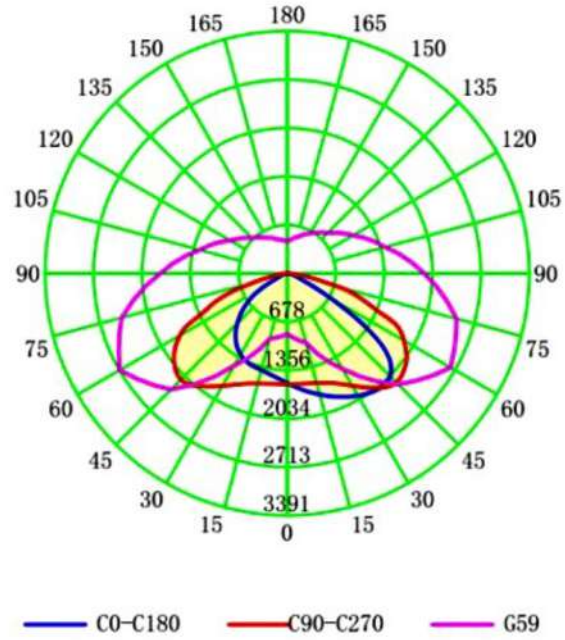
150W
21.85" (L) x 12.29" (W) x 4.85" (H)



200W
21.85" (L) x 12.29" (W) x 4.85" (H)



PHOTOMETRY



APPLICATION

